



Model: _____

Item #: _____ Quantity: _____

Project: _____



(18-24-7 shown)

1800 or 2100 Series Available
(see reverse)

- **Interior:**
20 gauge stainless steel with 3/8" radius corners welded and sealed. Available in 12" and 15" depth.
- **Cold Plate:**
Cast aluminum post mix plate with seven circuits. Plate is sealed into bottom. Each circuit is 5/16" OD stainless steel tubing. Two full with remainder to be half circuits. Bump and swedge fittings on ends.
- **Front Apron:**
22 gauge stainless steel clad over 20 gauge galvanized.
- **Backsplash:**
22 gauge stainless steel.
- **Sides:**
20 gauge stainless steel.
- **Back and Bottom:**
20 gauge galvanized.
- **Legs:**
1-5/8" tubular 16 gauge galvanized steel. Each leg to have grey plastic bullet foot.
- **Plumbing:**
1/2" IPS drain connection with cold plate (4" nipple provided).
1" IPS drain connection without cold plate.

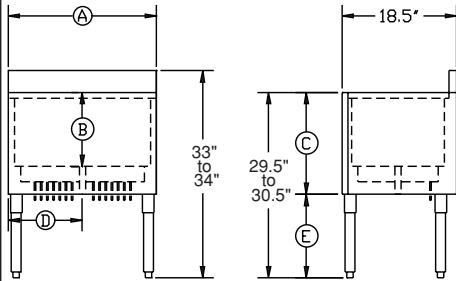
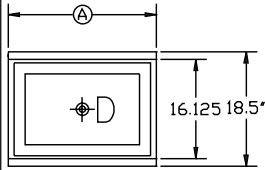
Accessories

- Standard Single Tier Keyhole Speedrail (available sizes: 24", 30", 36", and 48")
- Standard Double Tier Keyhole Speedrail (available sizes: 24", 30" and 36")
- Upgrade to Eight Circuit Cold Plate
- Stainless Steel Divider (specify ice bin model)
- Perforated bottom (on units without cold plates)
- Stainless Steel Sliding Cover (specify ice bin model and if bottle holders are bring used)
- Condiment Tray
- 3-Well Bottle Holder (two included with all ice bins)
- Stainless Steel Legs (upgrade)
- Bottle Wells

Approved By: _____

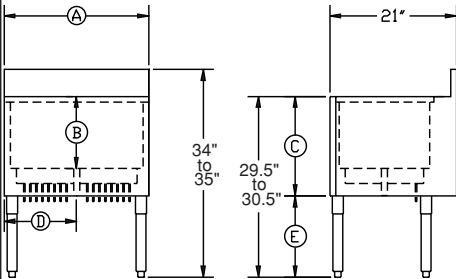
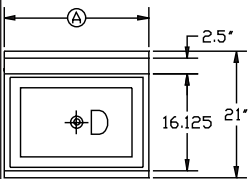
Model: _____ Item #: _____ Quantity: _____ Project: _____

1800 Series



| Model Numbers | Length Ⓐ | Bin Depth Ⓑ | Overall Depth Ⓒ | Left Side to Drain Ⓓ | Inside Bin. Dim. | Cold Plate Circuits | Ice Capacity lbs | Leg Size Ⓔ | Weight lbs |
|---------------|-------------|----------------|--------------------|-------------------------|------------------|---------------------|------------------|---------------|------------|
| 18-24 | 2'-0" | 12" | 13.5" | 12" | 15" x 22" | - | 80 | 16" | 55 |
| 18-30 | 2'-6" | 12" | 13.5" | 15" | 15" x 28" | - | 97 | 16" | 65 |
| 18-36 | 3'-0" | 12" | 13.5" | 18" | 15" x 34" | - | 115 | 16" | 69 |
| 18-24-7 | 2'-0" | 12" | 16.5" | 12" | 15" x 22" | 7 | 80 | 13" | 105 |
| 18-30-7 | 2'-6" | 12" | 16.5" | 15" | 15" x 28" | 7 | 97 | 13" | 113 |
| 18-36-7 | 3'-0" | 12" | 16.5" | 18" | 15" x 34" | 7 | 115 | 13" | 115 |
| 18-24DP | 2'-0" | 15" | 16.5" | 12" | 15" x 22" | - | 100 | 13" | 62 |
| 18-30DP | 2'-6" | 15" | 16.5" | 15" | 15" x 28" | - | 120 | 13" | 69 |
| 18-36DP | 3'-0" | 15" | 16.5" | 18" | 15" x 34" | - | 138 | 13" | 80 |
| 18-24DP-7 | 2'-0" | 15" | 19.5" | 12" | 15" x 22" | 7 | 100 | 10" | 132 |
| 18-30DP-7 | 2'-6" | 15" | 19.5" | 15" | 15" x 28" | 7 | 120 | 10" | 135 |
| 18-36DP-7 | 3'-0" | 15" | 19.5" | 18" | 15" x 34" | 7 | 138 | 10" | 145 |

2100 Series



| Model Numbers | Length Ⓐ | Bin Depth Ⓑ | Overall Depth Ⓒ | Left Side to Drain Ⓓ | Inside Bin. Dim. | Cold Plate Circuits | Ice Capacity lbs | Leg Size Ⓔ | Weight lbs |
|---------------|-------------|----------------|--------------------|-------------------------|------------------|---------------------|------------------|---------------|------------|
| 21-24 | 2'-0" | 12" | 13.5" | 12" | 15" x 22" | - | 80 | 16" | 55 |
| 21-30 | 2'-6" | 12" | 13.5" | 15" | 15" x 28" | - | 97 | 16" | 65 |
| 21-36 | 3'-0" | 12" | 13.5" | 18" | 15" x 34" | - | 115 | 16" | 80 |
| 21-24-7 | 2'-0" | 12" | 16.5" | 12" | 15" x 22" | 7 | 80 | 13" | 120 |
| 21-30-7 | 2'-6" | 12" | 16.5" | 15" | 15" x 28" | 7 | 97 | 13" | 130 |
| 21-36-7 | 3'-0" | 12" | 16.5" | 18" | 15" x 34" | 7 | 115 | 13" | 135 |
| 21-24DP | 2'-0" | 15" | 16.5" | 12" | 15" x 22" | - | 100 | 13" | 65 |
| 21-30DP | 2'-6" | 15" | 16.5" | 15" | 15" x 28" | - | 120 | 13" | 80 |
| 21-36DP | 3'-0" | 15" | 16.5" | 18" | 15" x 34" | - | 138 | 13" | 95 |
| 21-24DP-7 | 2'-0" | 15" | 19.5" | 12" | 15" x 22" | 7 | 100 | 10" | 150 |
| 21-30DP-7 | 2'-6" | 15" | 19.5" | 15" | 15" x 28" | 7 | 120 | 10" | 155 |
| 21-36DP-7 | 3'-0" | 15" | 19.5" | 18" | 15" x 34" | 7 | 138 | 10" | 160 |

Mechanical Requirements:

- 1" IPS Drain Connection without Cold Plate.
- 1/2" IPS Drain Connection with Cold Plate.

Approved By: _____